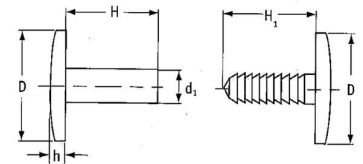
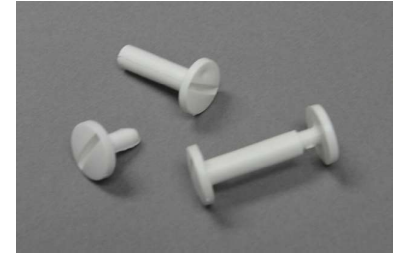


Binder Screws

Designed to fit with mating parts, fastening multiple panels securely by hand

Part Number	d1	H	Size	H1	D	h
04-PBSH5-10W	5.0	10.0	M4	10.0	12.0	2.6
04-PBSH5-15W	5.0	15.0	M4	10.0	12.0	2.6
04-PBSH5-25W	5.0	25.0	M4	10.0	12.0	2.6
04-PBSH5-35W	5.0	35.0	M4	10.0	12.0	2.6
04-PBSH5-10B	5.0	10.0	M4	10.0	12.0	2.6
04-PBSH5-15B	5.0	15.0	M4	10.0	12.0	2.6
04-PBSH5-20B	5.0	20.0	M4	10.0	12.0	2.6
04-PBSH5-40B	5.0	40.0	M4	10.0	12.0	2.6
04-PBSH5-50B	5.0	50.0	M4	10.0	12.0	2.6
04-PBSH5-60W	5.0	60.0	M4	1.0	12.0	2.6



Material: HDPE

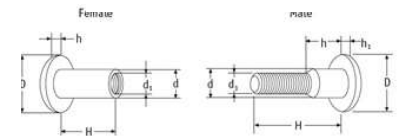
W Suffix = White **B** Suffix = Black

*Male / female parts sold together

Book Screws

Designed to fit with mating male / female parts

Part Number	Type	D1	D	H	d	h	H1
04-PBKS08-10MW	Male	M6	16	10	8	-	3
04-PBKS08-10FW	Female	M6	16	10	8	3	-



Material: Nylon 6/6

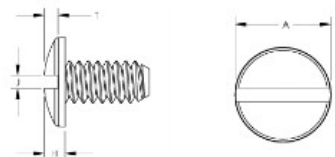
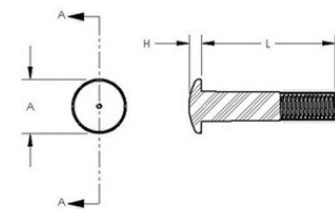
*Screws & posts are sold separately

Imperial Threaded Binder Screws

Simple, effective, fast binding solution

Used in a variety of applications including;

- Architectural drawings • Paper & Scrapbooking • Swatch Books • Acrylic Displays



Posts

Part Number	Thread	Post Outside Dia	Length	A	Head Height	Screw Length
04-PBSP6-6C	832	5.5	6.3	9	2.3	6.3
04-PBSP6-9C	832	5.5	9.5	10	2.3	9.5
04-PBSP6-13C	832	5.5	12.7	10	2.3	9.5

Screws

Part Number	Thread	A	H	J	T	Length
04-PBSP6-6SCREW	832	9	2.3	1.5	1.6	6.3
04-PBSP6-9SCREW	832	10	2.3	1.5	2.4	9.5

Material: Clear Polycarbonate

*Screws & posts are sold separately