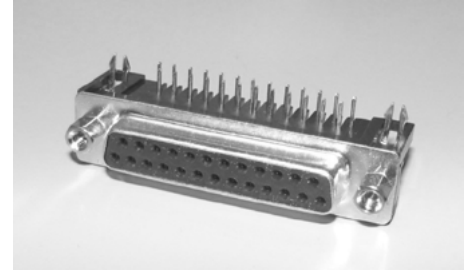


## D-SUB Connectors

### Right Angle PCB Mounting

- Quality Brass (Male) or Phosphor Bronze (Female) Gold Plated Contacts.
- Housing PBT 30% Glass ( UL94VO.)
- Current Rating: 5A
- Contact Resistance: 30mΩ max at 100mA DC
- Dielectric Strength: 1000VAC for 1 min.
- Operating Temp. -55°C to +105°C.



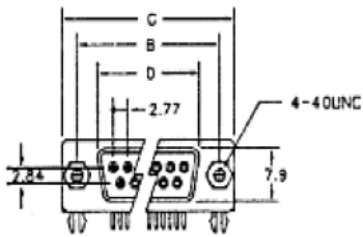
Female

#### Standard Type

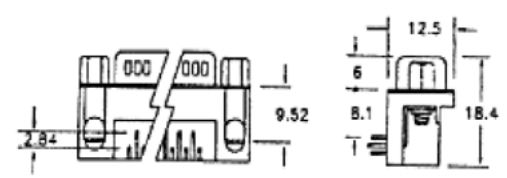
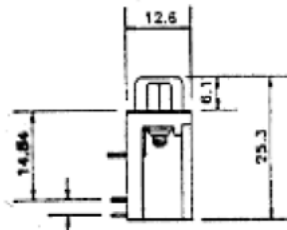
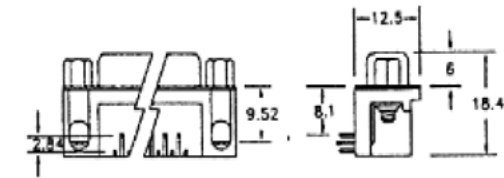
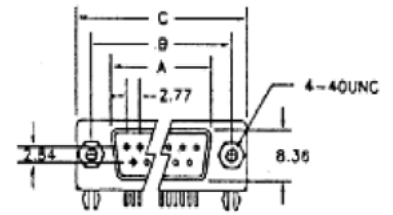
Part Number 32-107B xx P (Male) or S (Female)

xx = Number of Contacts (09, 15, 25 or 37)

Male



Positions	A	B	C	D	E
9	16.92	24.99	30.81	19.28	16.33
15	25.25	33.62	39.14	27.51	24.66
25	38.96	47.04	53.04	41.30	38.38
37	55.42	61.50	69.32	57.71	54.84



**Extended Reach Type** Part Number 32-107CxxP (Male) or S (Female) xx = Number of Contacts (09,15, 25 or 37)

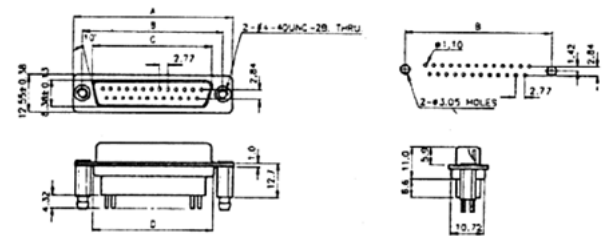
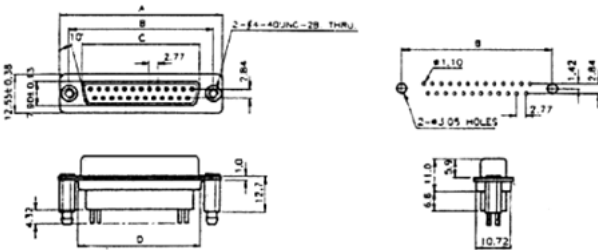
## Straight PCB Mounting

- Quality Brass (Male) or Phosphor Bronze (Female) Gold Plated Contacts.
- Housing: Glass Filled Nylon ( UL94VO.)
- Current Rating: 5A
- Contact Resistance: 15mΩ max
- Dielectric Strength: 1000VAC for 1 min.
- Operating Temp. -55°C to +105°C.



Male

Female



Positions	A	B	C	D
	±0.38	±0.13	±0.13	±0.13
9	30.81	24.99	16.33	19.28
15	39.14	33.32	24.66	27.51
25	53.04	47.04	38.38	41.30
37	69.32	63.50	54.85	57.71

Positions	A	B	C	D
	±0.38	±0.13	±0.13	±0.13
9	30.81	24.99	16.92	19.28
15	39.14	33.32	25.25	27.51
25	53.04	47.04	38.96	41.30
37	69.32	63.50	55.42	57.71

#### Standard Types

Part No. 32-155 xx P (Male) or S (Female) xx = No of Contacts (09,15,25 or 37)

Variations available: Holes, Threads, Screw Locks, Board Locks, Setbacks, Heights.