

Hammond RITEC - Hand Held and Flanged Lid Deep Lid/Shallow Lid Boxes - RL Series

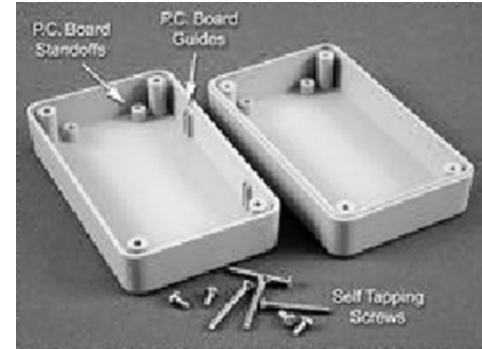
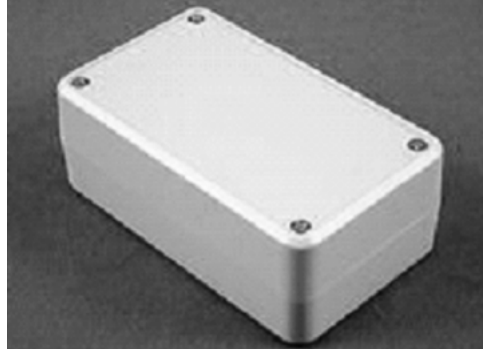
Designed to house P.C. Boards

- Two part - snap action - clam shell construction. Both halves include smooth recessed area for membrane, label or silkscreen.
- Designed to meet IP54.
- P.C. board standoffs are molded into both halves of the enclosure.
- P.C. board guides molded into top half of deep lid types.
- Material: Molded in a light grey general purpose ABS plastic with a light texture.

Shallow Lid



Deep Lid



For detailed drawings, CAD files and colour photos visit www.hammondmfg.com

Shallow Lid

Part Number		Dimensions		
Grey	With Flanged Lid	Length	Width	Height (With Lid)
26-RL6105	26-RL6105-F	80	60	30
26-RL6115	26-RL6115-F	80	60	40
26-RL6215	26-RL6215-F	125	80	35
26-RL6225	26-RL6225-F	125	80	50
26-RL6335	26-RL6335-F	125	100	60
26-RL6365	26-RL6365-F	125	100	90
26-RL6435	26-RL6435-F	150	100	60
26-RL6465	26-RL6465-F	150	100	90
26-RL6555	26-RL6555-F	175	125	70
26-RL6585	26-RL6585-F	175	125	100
26-RL6655	26-RL6655-F	200	150	70
26-RL6685	26-RL6685-F	200	150	100

Deep Lid

Part Number	Dimensions (Base Only)		
Grey ABS	Length	Width	Height (With Lid)
26-RL6015	104	65	40
26-RL6035	114	65	40
26-RL6055	178	105	40
26-RL6065	205	105	40