

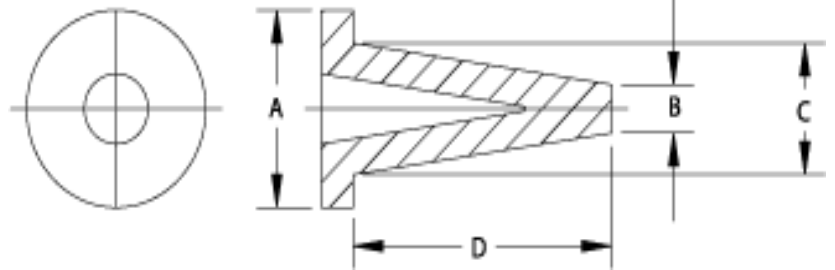
## SILICONE FLANGE PLUGS

**Silicone Flange Plugs** are recommended for applications requiring a grounding are mask. The tapered, hollow design allows for easy insertion into threaded or non-threaded holes.

### Features

Resistant to temperatures up to 316°C.

- Withstands multiple passes through most coating processes.
- Will not contaminate a paint line.
- Custom colours available.



Part Number	A (mm)	B (mm)	C (mm)	D (mm)
12-SLF0622	12.52	2.52	6.30	22.61
12-SLF0825	16.03	3.51	8.51	25.02
12-SLF10327	16.03	3.89	10.39	27.94
12-SLF13936	19.03	6.99	13.97	36.07
12-SLF17438	25.04	10.01	17.48	38.10
12-SLF19550	28.02	10.01	19.51	50.80
12-SLF20749	25.40	10.01	20.78	49.02
12-SLF22050	30.96	10.01	22.05	50.80